

ARYA
CORPORATE

near **AJC Bose Road**

Where Ideas Meet Ambition

B+G+6 STORIED BUILDING

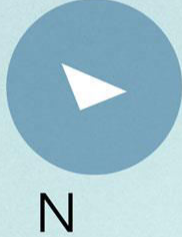
Commercial & Office space





A Landmark Location

Easy access to **AJC Bose Road Flyover**



EASY ACCESS TO
A.J.C. BOSE RD. FLYOVER
ROAD

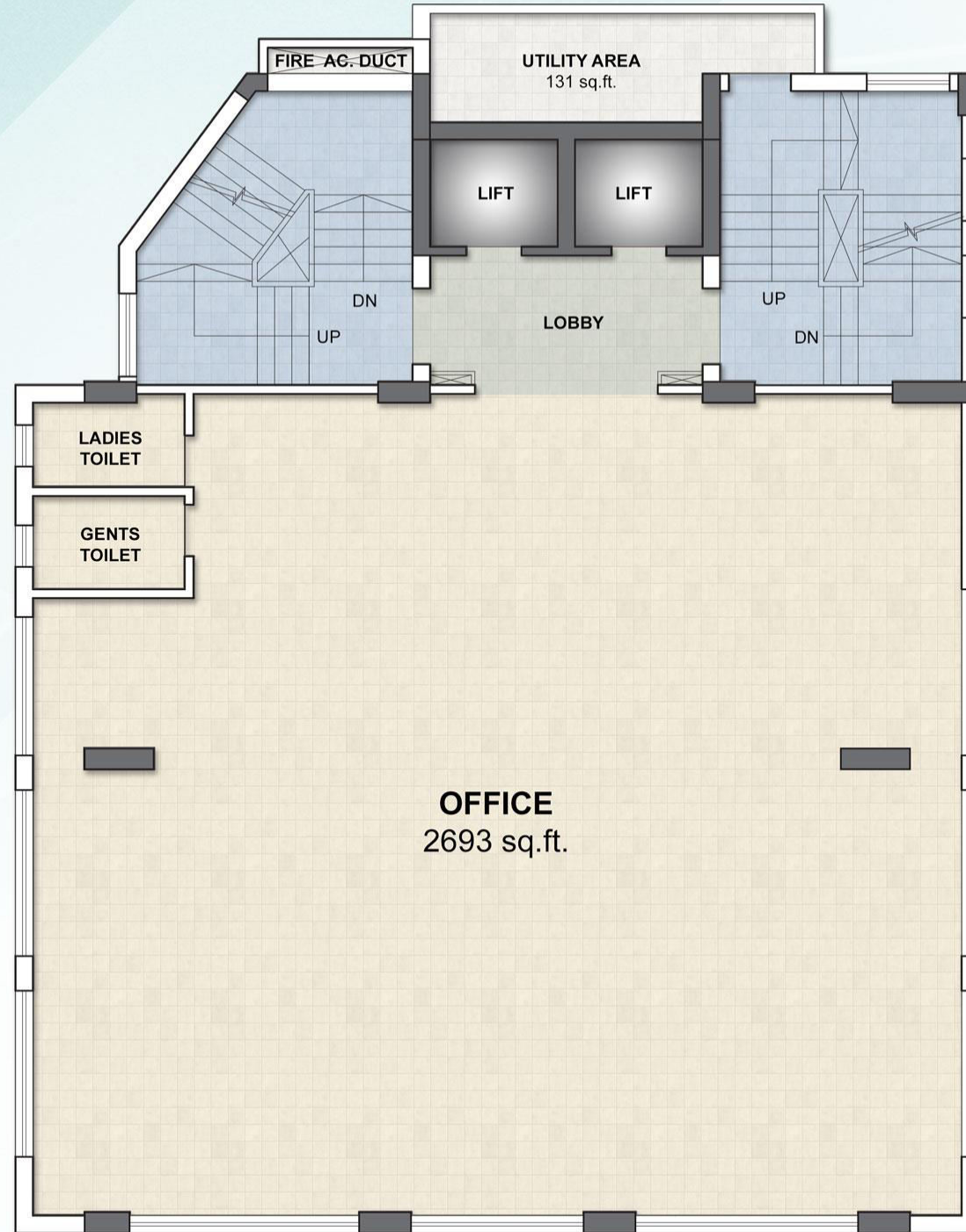
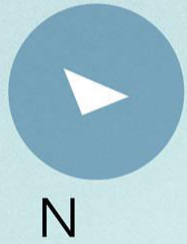


Mechanical
Car Parking System



Ground Floor

ENTRY ENTRY
100 FT. WIDE A.J.C. BOSE ROAD



Typical Floor

Salable Area : 2824 sq.ft.



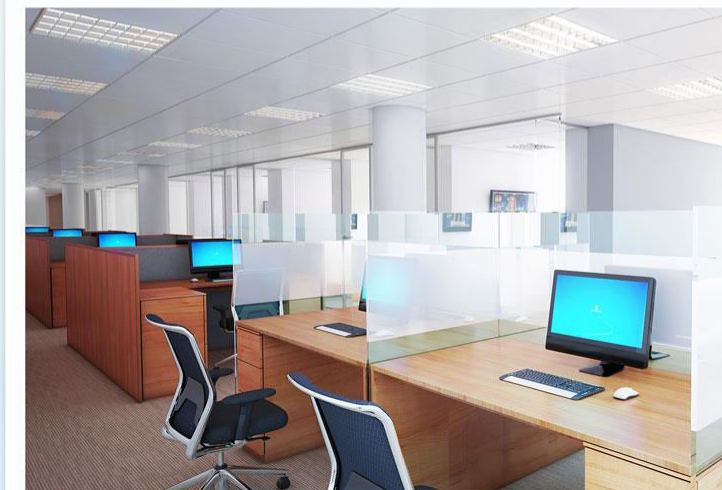
BUILDING RECEPTION



OFFICE RECEPTION



OFFICE CABIN



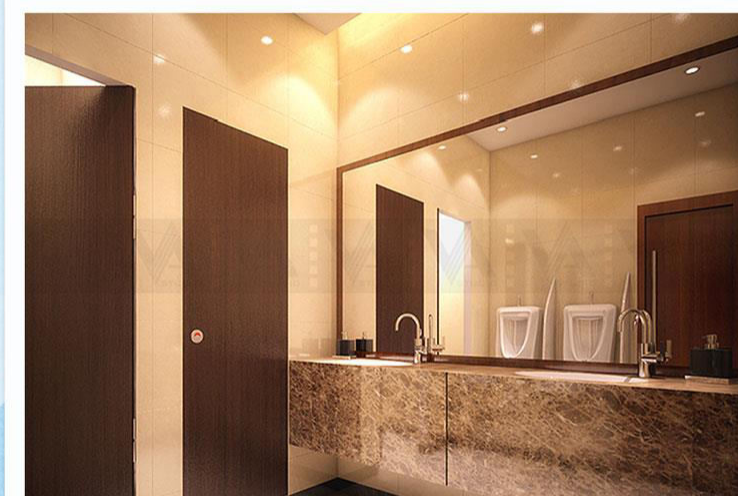
OFFICE



CONFERENCE ROOM



VISITORS' AREA



TOILET

Features

State-of-the-art commercial building
at landmark location

Easy access to AJC Bose Road flyover

Almost pillar less floors and three-side open

Grand entrance lobby of nearly 15 ft. height

Salable floors : 1st to 3rd

Salable area / floor : 2824 sq.ft. approx.

Adequate Car parking

Business centre in the basement*

Cold Shell Offices

Premium elevators

Wi-fi connectivity

24x7 security

**Business center is provisional*



Specifications

Structure: RCC/Steel framed, earthquake resistant wide span super and sub-structure

External finish: Energy-efficient glass façade to minimize heat & sound along with cladding & paint finish

Entrance Lobby: Grand 4.5 metre height air-conditioned lobby

Flooring: Granite or polished imported marble and beautiful tiles in common area

Elevators: Two nos. premium high speed elevators

Communication Facilities: Provisions for broadband internet and intercom system

Power: 24 hour power supply and back up for common areas

Electrical: Main switch to CESC supply

Security: CCTV surveillance system with round the clock security

Fire Safety: Fire detection system with smoke detectors, sprinklers and wet risers as per safety recommendation of West Bengal Fire & Emergency service department



Think Big | Think Arya



REALTY

www.aryarealty.in

Member



The ARYA Group of Companies was inducted into building and nurturing the life foundations under the charismatic stewardship of Late Shri Abhe Ram Arya and Late Atma Ram Arya well over five decades ago in 1952, the name initials of the founders forming the Group name. In each stride it took and every venture it launched, the Group consistently wove these elements of life together.

M/s. Air Carrying Corporation pioneered the process of bridging distance with its passenger and cargo service by air in North Bengal and Assam in 1952. After nationalisation of private air services in India and stimulated by this concept of convenience networking, ARYA Group diversified into a nationally operating road transport industry as Associated Transport Corporation (P) Ltd. and rail freight forwarding agency as Freight Forwarders of India with a network of over 100 branches across the prime business centres in the country. Soon, it brought under its service-fold Hire Purchase and Financing of automobiles and C&F Agency for Philips India Ltd. for the entire North East.

Motivated by the visions of shelter, security and dreams, the Group soon took its firm steps into the growing business of realty. What started as constituting warehouses across the country and multi-storeyed buildings in the prime localities of the leading metros has burgeoned today in an enviable dimension. Simultaneously, the Group made a giant leap into real estate development and takes pride in all its projects.



ANANTA
Bandhaghat, Howrah



ARYA HUB
Majerhat (New Alipore)



CLIVE SQUARE
Canning Street Crossing



PARK IMPERIAL
Near Park Street

ARYA CORPORATE



Corporate Office
Jasmine Tower
Room #305
31 Shakespeare Sarani
Kolkata 700017

Site Address
Arya Corporate
18, Circus Avenue
kolkata 700017

for Details
98309 22792

Disclaimer: All information, plans, features & offerings are subject to change without prior notice. Photographs are used for illustration purposes only and may not bear any resemblance to actual features / offerings. All travel times shown in location map are approximate and do not account for traffic. All Building elevations are based on architectural concepts and are subject to revision without prior intimation. All site surroundings shown in the elevation are computer generated and do not represent actual imagery. The Metro Railway bridge shown is an artist's impression of the proposed alignment. This is not a legal offering or document.